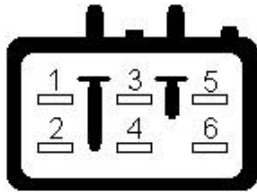


Jawa 650

664 170
071000-1910 QCB91



Original unit

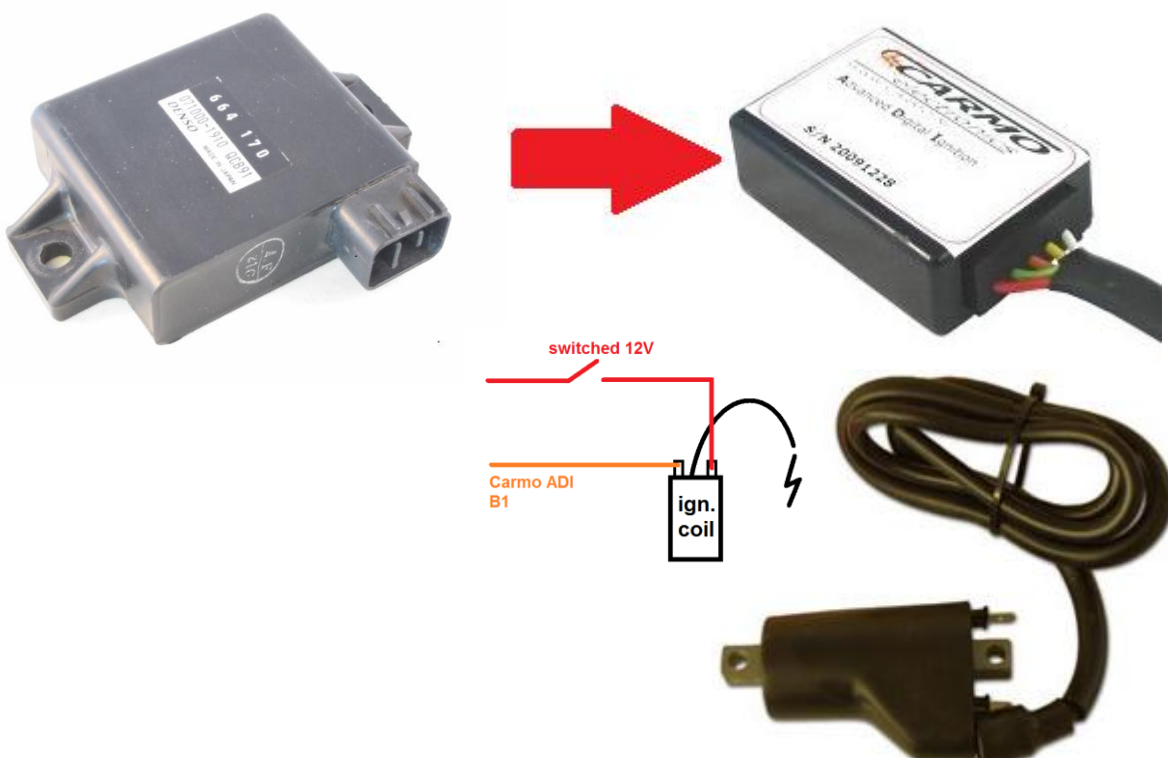
- 1. : CDI-ignition coil
- 2. : 12V
- 3. : Ground
- 4. : Secure (Ground is ON)
- 5. : Pick-up reference
- 6. : Pick-up signal



CARMO-ADI

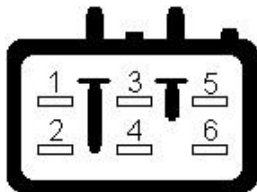
- | | | |
|-----|-----|---------------------------------|
| B1 | O | TCI-ignition coil |
| A1 | R | 12V |
| A2 | G | Ground |
| A5 | Gry | Secure (Ground is ON) |
| A4 | Y | Pick-up + |
| A3 | W | Pick-up - |
| (B2 | O | extra TCI-ignition coil output) |

!! The original **CDI**-ignition coil must be replaced by the Carmo **TCI**-ignition coil
!! The Carmo **TCI**-ignition coil needs a switched 12V on the '+' connection



Jawa 650

664 170
071000-1910 QCB91



Originele unit

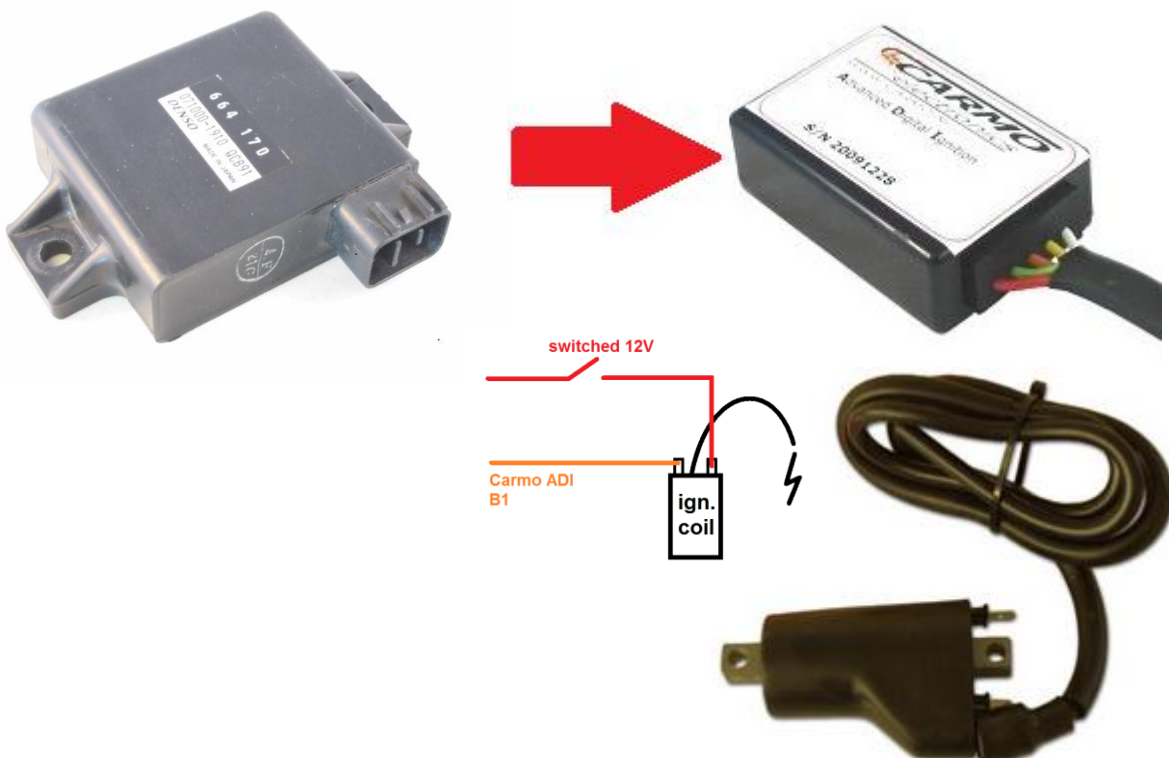
- 1. : CDI-bobine
- 2. : 12V
- 3. : Massa
- 4. : Beveiliging (Massa is AAN)
- 5. : Pick-up referentie
- 6. : Pick-up signaal



CARMO-ADI

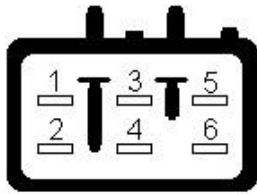
- B1 TCI-bobine
- A1 12V
- A2 Massa
- A5 Beveiliging (Massa is AAN)
- A4 Pick-up +
- A3 Pick-up -
- (B2 extra TCI-bobine uitgang)

!! De originele **CDI-bobine** dient vervangen te worden door de Carmo **TCI-bobine**.
!! De Carmo **TCI-bobine** heeft een geschakelde 12V op de '+' aansluiting nodig.



Jawa 650

664 170
071000-1910 QCB91



Original-Einheit

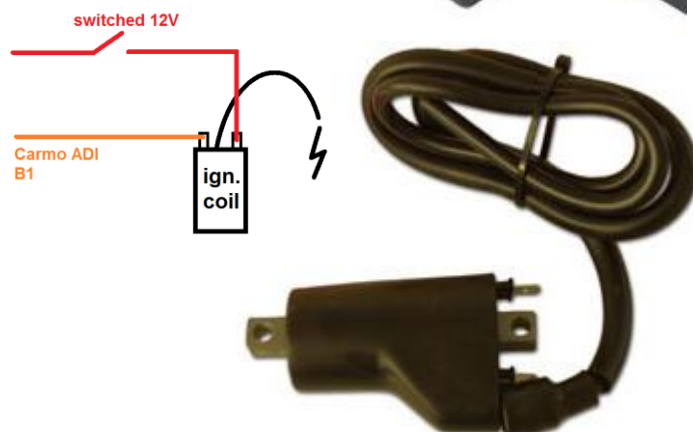
- 1. : CDI-Zündspule
- 2. : 12V
- 3. : Masse
- 4. : Schütz (Masse ist AN)
- 5. : Pick-up Referenz
- 6. : Pick-up Signal



CARMO-ADI

- B1 TCI-Zündspule
- A1 12V
- A2 Masse
- A5 Schütz (Masse ist AN)
- A4 Pick-up +
- A3 Pick-up -
- (B2 extra TCI- Zündspule Ausgang)

!! Das Original **CDI**-Zündspule muss vom Carmo **TCI**-Zündspule ersetzt werden.
!! Die Carmo **TCI**-Zündspule benötigt einen geschalteten 12V auf das '+'-Verbindung



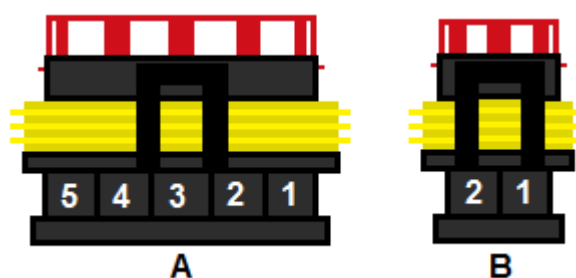
AMP connector description

You can just use a plier to mount the wires on the tab or receptacle (also soldering the copper wire is better)

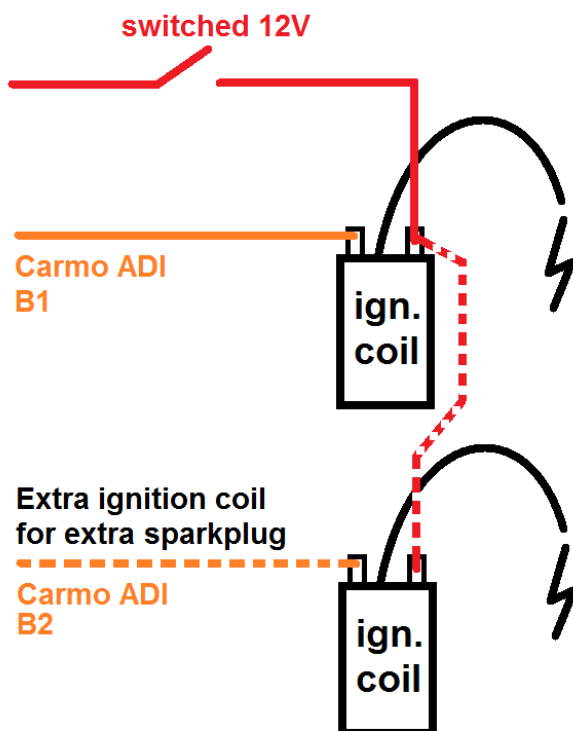
Or use the tool for it; AMP PRO-CRIMPER II (AMP code 58583-1)



On the bike loom;



Ignition coil and extra ignition coil schematic;



Team-Carmo